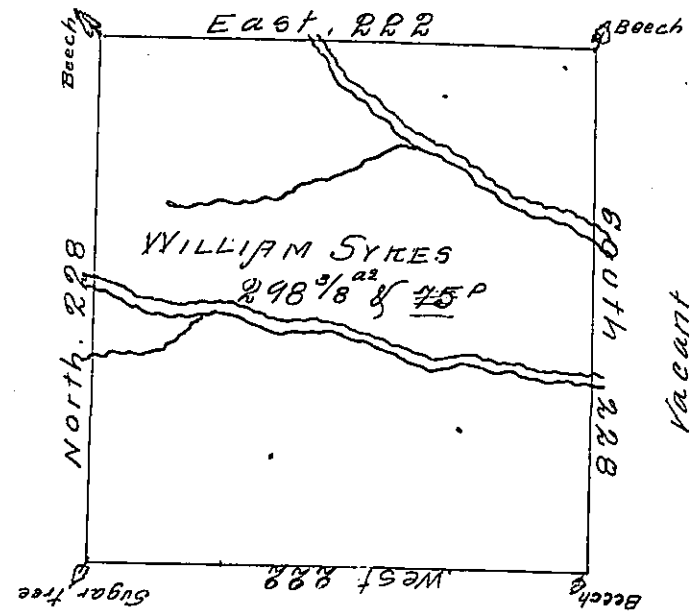


A. 65-166  
John Webster

Saml Eettle

Thomas Marrison



C. 129. 4/44

Stacy (ob) burn

Thomas Paxton

A Draught of a Tract of Land situate in Bedford County and adjoining lands of John Webster. Surveyed the 20<sup>th</sup> day of October 1786 in pursuance of a Warrant dated the 30<sup>th</sup> day of July 1776. Containing Two hundred & Ninety eight acres—and usual allowance of six per Cent for Roads &c<sup>o</sup>

W<sup>t</sup> N<sup>o</sup> 95

George Woods D.S.

John Lukins Esq<sup>r</sup> S.G.

IN TESTIMONY that the above is a copy of the original remaining on file in the Department of Internal Affairs of Pennsylvania, made conformably to an Act of Assembly approved the 16th day of February, 1833, I have hereunto set my Hand and caused the Seal of said Department to be affixed at Harrisburg, this fourteenth day of December 1906

*Isaac B. Brown*  
Secretary of Internal Affairs.